



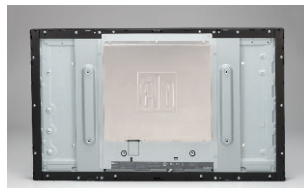
3243L 32" Open-frame Touchmonitor

The Elo Touch Solutions 3243L 32-inch full HD open-frame touchmonitor provides smooth dual-touch performance with IntelliTouch Plus surface acoustic wave technology. The 3243L touchmonitor is 2.3" (59mm) in total thickness and less than 1" (25mm) in border width. The new sleek mechanical design enables thinner and smaller kiosk design for various applications like retail, hotels, gaming, transportation and other commercial uses. Applications in demanding public access environments are enabled with UL60950 product compliance.

The 3243L features a unique, injection-molded bezel with a virtually invisible water-resistant seal, making it a good choice for the rigors of public use. Narrow borders, multiple mounting options, and a USB touch interface add to the versatility of the 3243L.

Features

- 1920 x 1080 full HD provides a bright, high contrast display with wide-view angle that easily attracts and holds the user's attention
- IntelliTouch Plus surface acoustic wave technology provides dual-touch performance
- New sleek design: 2.3" total thickness; less than 1" borders; 30% less total weight—27 lbs (12.3kg)
- LED backlighting reduces power consumption by 60% and generates less heat than traditional CCFL backlights
- Commercial durability enabled with UL60950 product compliance
- Multiple mounting options are available
- Worldwide agency approvals and a 3-year standard warranty



3234L 32" Open-Frame Touchmonitor

Model	3243L
Color	Black
Active Display Area	27.49" x 15.47" (698.4mm x 392.85mm)
Dimensions*	28.95" x 17.44" x 2.28" (735.4mm x 443mm x 58mm) max
LCD Technology	Active matrix TFT LCD
Diagonal Size	31.5"
On-Screen Display (OSD)	Accessible through switches on the OSD Control Remote accessory. Controls: Menu, Up, Down, Select; Settings: Brightness, Contrast, Clock, Phase, H-position, Vposition, Auto-Adjust, Aspect Ratio, Sharpness, Color Temperature, OSD Timeout, OSD Language, Recall Defaults, Video Source; Languages: English, French, Italian, German, Spanish, Simplified Chinese, Traditional Chinese, Japanese; Lockouts: OSD, Power
Mounting Options*	400mm x 200mm VESA 4-hole mounting interface on rear of unit Side mounting brackets included with unit
Aspect Ratio	16:9
Native Resolution	1920 x 1080
Preset Video Timings	640x480 60Hz, 800x500 60Hz, 800x600 56, 60Hz, 1024x768 60Hz, 1280x720 60Hz, 1280x960 60Hz, 1280x1024 60Hz, 1360x768 60Hz, 1366x768 60Hz, 1440x900 60Hz, 1600x1200 60Hz, 1680x1050 60Hz, 1920x1080 60Hz
Number of Colors	16.7 million
Brightness (typical)	LCD Panel: 350 nits; with Non-Touch: 315 nits; with IntelliTouch Plus: 315 nits
Response Time (Tr + Tf) (typical)	6.5 ms
Viewing Angle (typical)	Horizontal: 178°; Vertical: 178°
Contrast Ratio (typical)	3000:1
Video	Analog VGA on Female DE-15 connector; HDCP-capable HDMI 1.3 on HDMI Type A receptacle connector (ET3243L-XXWA models only); Digital DVI on Female DVI-D, Dual-Link connector (ET3243L-XXAA models only) Input Video Horizontal Sync frequency range: 31.5-80KHz Input Video Vertical Sync (frame rate) frequency range: 47-63Hz
Power	Input power connector: IEC 60320 C14; Input power signal specifications: 100-240VAC, 50/60Hz Power Consumption (Typical): ON (monitor + AC/DC adapter): 55W; SLEEP (monitor + AC/DC adapter): 1.4W; OFF (monitor + AC/DC adapter): 0.3W
Weight	Unpackaged: 27.12 lbs (12.3kg); Packaged: 41.5 lbs (18.8kg)
Shipping Dimensions	39.05" x 26.45" x 11.65" (992mm x 672mm x 296mm)
Temperature	Operating: 32°F to 104°F (0°C to 40°C); Storage: (-4°F to 140°F) -20°C to 60°C
Humidity (non-condensing)	Operating: 20%-80%; Storage: 10%-90%
Regulatory approvals and declarations	S-Mark; C-Tick; CUL, IC; CCC; CE; VCCI; KC, KCC, e-Standby; CoC; GOST; BSMI; UL, FCC; CB; RoHS, China RoHS, WEEE; UL60950
Warranty	3-year standard
MTBF	50,000 hours demonstrated

*See dimensional drawings for details

Ordering Information

MODEL	PART NUMBER	TECHNOLOGY	INTERFACE	SURFACE TREATMENT	AVAILABILITY
32433L	E589724	IntelliTouch Plus	USB	Clear	Worldwide
	E444804	IntelliTouch Plus	USB	Clear	Asia

Optional Peripherals

PERIPHERAL	PART NUMBER
Cable Kit for Replacement Cables	E378229
Remote On-Screen Display (OSD)	E483757

To find out more about our extensive range of Elo touch solutions, go to www.elotouch.com, or call the office nearest you.

North America
Elo Touch Solutions
1033 McCarthy Blvd.
Milpitas, CA 95035-7920

800-ELO-TOUCH
Tel +1 408 597 8000
Fax +1 408 597 8050
customerservice@elotouch.com

Europe
Tel +32 (0)16 70 45 00
Fax +32 (0)16 70 45 49
elosales@elotouch.com

Asia-Pacific
Tel +81 (45) 478-2161
Fax +81 (45) 478-2180
www.tps.co.jp

Latin America
Tel 786-923-0251
Fax 305-931-0124
www.elotouch.com.ar

Elo Touch Solutions, Inc. reserves the right to change or update, without notice, any information contained herein; to change, without notice, the design, construction, materials, processing or specifications of any products; and to discontinue or limit production or distribution of any products. Elo (logo), Elo Touch Solutions and IntelliTouch are trademarks of Elo Touch Solutions, Inc.
Copyright 2013 Elo Touch Solutions, Inc. All rights reserved. DS000073, rev 03/2013

www.elotouch.com



Legacy Technology Services

We Rent & Sell All Types Of Barcode Equipment

Call now to talk to an expert

866-271-9891

www.LegacyGlobal.com

Some brands we carry



MOTOROLA

Intermec

DATALOGIC™

Honeywell

EQUINOX
PAYMENTS



About us

- Legacy Technology Services is a leading nationwide provider of mobile computing, barcode, printers and point of sale equipment and services.
- For over a decade, thousands of clients across North America have trusted us to provide equipment from leading manufacturers backed by the services to support them.

Latest Hardware from top manufacturers

- Legacy handles virtually every major manufacturer of mobile computing, barcoding and point of sale equipment.

Expert Repair and Maintenance services

- Legacy is one of the best repair facilities in North America

Discontinued product sourcing

- They don't make it anymore? Our inventory also includes manufacturer close-outs and discontinued equipment to support our clients legacy infrastructure.

Trade-in and Disposal services

- That old equipment laying around your facility may still have some value. Legacy routinely purchases equipment from our clients around the globe.
 - Data destruction
 - Hardware disposal
 - Auditing services

Dedicated client account team

- Dedicated, highly trained account managers are here to answer all your questions and provide top notch service.

Equipment rental services

- Sometimes renting is a better solution, Legacy's huge rental inventory provides the equipment you need for temporary needs and projects.



Legacy, Inc.,
160 West Road,
Ellington, CT 06029

Toll Free: 866-271-9891
Fax: 888-522-4684